

**Govt. of India**  
**Ministry of Human Resource Development**  
**Dept. of School Education and Literacy**  
**Mid Day Meal Division**

**PAB-MDM meeting**  
**to consider and approve AWP&B 2018-19**

**(Date of the meeting: 06.06.2018)**



**APPRAISAL NOTE**

**STATE : PUNJAB**

**INDEX**

<b>Sl. No.</b>	<b>CHAPTER</b>	<b>Page no.</b>
	Pre-requisite steps for submission of AWP&B	<b>2</b>
<b>Part-A</b>	General Information	<b>3-4</b>
<b>Part-B</b>	Review of performance during 2017-18	<b>5-13</b>
<b>Part-C</b>	Recommendations of Appraisal team and quantification of variables for central assistance during 2018-19.	<b>14-17</b>
<b>Part-D</b>	Fact sheet.	<b>18</b>

### Status on Pre requisite steps required for submission of AWP&B

Pre-requisite step	Status
Plan should be approved by SSMC Meeting	Yes
100% payment of honorarium shall be made to cook cum helpers up to 31 <sup>st</sup> March, 2018	Yes
100% payment of cost of food grains shall be made to FCI up to 31 <sup>st</sup> March, 18	Yes
Separate and detailed MME plan.	No
Bank account should be opened for cook cum helpers	Yes
Plan should also be submitted through MDM-MIS	Yes
Annual and Monthly data entry for the FY 2017-18 should be completed up to March, 2018	Yes
ATN on commitments by the State Govt. during PAB Meeting of March, 18	Yes
ATN on findings of JRM reports	Yes
Plan should be submitted within the scheduled date in hard and soft copies	Yes

#### Issues

- Delay in the release of funds to Implementing Agencies.
- Less coverage of 12 working days both in Primary and Upper Primary.
- Food samples taken from 6 districts only out of 22 districts.
- Less meetings of District Level Steering-cum-Monitoring Committee (four in Bhatinda & Fatehgarh Sahib and 5 in SAS Nagar.)
- Less reporting (37%) under AMS.
- Less Multi tap facility (37%) in schools.
- Kitchen Gardens available in 277 schools only.
- Schools located 70 kms away are covered by Centralized Kitchen in Amritsar.

#### Best Practices

- Additional contribution of Rs.700/- in honorarium to CCH.
- E-transfer of funds.
- Two Iron storage bins provided in each school.
- Mothers also cook and serve Mid Day Meal in schools.
- Hand Washing Day celebrated on 9th October.2017
- Hand Washing units constructed by Nestle in 75 schools.
- RO units donated by 'Sarbat da Bhala Charitable Trust' in 154 schools.
- In-kind contribution of Rs. 70.75 lakh by community in MDMS.
- All the 47 food samples were found as per norms.
- LPG in all schools.
- 98 % enrolment under Aadhar.
- Eating Plates available in all schools.
- All the sanctioned kitchen-cum-stores constructed.

## Part-A : General Information

Government of India launched the scheme of National Programme of nutritional support to primary education also known as **Mid-Day-Meal Programme** on 15<sup>th</sup> August, 1995 for providing wheat @ 3 kg per student per month (for 10 months in a year) subject to 80% attendance to the children studying in primary classes in government and local body schools.. Meanwhile, the apex court also intervened and vide its decision dated 28<sup>th</sup> November, 2001 the Supreme Court directed that the State Government/Union Territories to implement the Mid-Day-Meal Scheme by providing every child in every Government and Government Assisted primary schools with a prepared Mid-Day-Meal with minimum contents of 450 calories of energy and 8-12 grams of protein each day of school for a minimum of 200 days. Those Governments providing dry rations instead of cooked meals must within 3 months start providing cooked meals in all Government Aided primary schools in all half the districts of the state(in order of poverty) and must within a further period of 3 months extend the provisions of cooked meals to the remaining parts of the state.

Supreme Court further directed that Union of India and the FCI to ensure provision of fair average quality grain for the scheme in time. The State/Union Territories and the FCI are directed to do joint inspection of food grains. If the food grains is found, on joint inspection, not to be of fair average quality, it will be replaced by the FCI prior to lifting”.

Like many other states, Punjab could not switch over to cooked meal scheme from the very beginning due to certain reasons inter alia due to paucity of funds involved in the conversion of foodgrains to cooked meal. However, in compliance with the Supreme Court’s order dated 28-11-2001, cooked meal was provided to the children of primary classes in one block in every district of Punjab during the year 2002-03. The Govt. of Punjab started providing cooked meal to all the students of primary classes in Govt. schools with effect from September, 2004 and for this purpose, a sum of Rs. 666.00 lacs during the financial year 2004-05 was released to the Deputy Commissioners, who are also the Chairmen of the District level Steering-cum-Monitoring Committee for implementation of this scheme at district level. During the financial year 2005-06, a sum of Rs. 1309.86 lacs was released to the Deputy Commissioners as conversion cost for providing cooked meal to the students in the Government and Government-Aided private schools under the scheme. Subsequently, it was extended to children enrolled under Education Guarantee Scheme (EGS) and Alternative Innovative Education (AIE) centres working under Sarva Shiksha Abhiyan Programme.

### **Objectives of the Programme:-**

The main objectives of the programme are:-

- a) To increase enrolment, retention and to tone up the learning abilities of the beneficiaries, especially of children belonging to poor and down trodden sections of the society;
- b) To provide nutritious meal to the school going children to achieve the goal of sound mind in healthy body;
- c) To promote friendship and feelings of common brotherhood among the children belonging to different caste, colour and creed by providing meals to them together and also to increase their retention in schools.

**1. Basic Information:**

**(Year 2017-18)**

S. No.	INDICATORS	STATUS		
		PRY	U PRY	TOTAL
<b>1. No. of Institutions</b>		PRY	U PRY	TOTAL
i)	Approved by MDM-PAB for 2017-18	13425	6732	20157
ii)	Covered during the year	13425	6732	20157
<b>2. No. of Children</b>				
i)	Approved by MDM-PAB	905000	640000	1545000
ii)	Enrollment as on 30.9.2017	995960	711921	1707881
ii)	Average No. of children availed MDM during 01.04.2017 to 31.03.2018*	856476	596234	1452710
<b>3. Coverage of children as per Quarterly Progress Report (QPR)</b>				
i)	Average no. of children availed MDM as per <b>QPR-1</b>	840873	589126	1429999
ii)	Average no. of children availed MDM as per <b>QPR-2</b>	850670	600630	1451300
iii)	Average no. of children availed MDM as per <b>QPR-3</b>	860856	620840	1481696
iv)	Average no. of children availed MDM as per QPR-4	856207	577036	1433243
<b>4. No. of Working Days</b>				
i)	Approved for 2017-18	243	243	
ii)	Covered during <b>2017-18</b>	231	231	
<b>5. Per unit cooking cost Per child per day (in Rs.)</b>				
AVERAGE UNIT COOKING COST PCPD		4.13	6.18	
State's contributions in cooking cost per child per day		1.65	2.47	

\*percentage to enrolment

# The minimum mandatory State Share is Rs. 1.65 and Rs. 2.47 per child per day for primary and upper primary respectively.

## **Part-B : Review of Performance in 2017-18 (01.04.17 to 31.03.2018)**

2. Based on the information provided by the State Government in its AWP&B 2017-18, the performance during 2017-18 (01.04.17 to 31.03.2018) was reviewed. The major issues in implementation during 2017-18 are summarized as under: -

### **2.0 Coverage of Institutions**

**Coverage in terms of No. of institutions.**

**Difference between PAB Approval (Target) Vs No. of institutions covered (Achievement) –**

<b>i) PRIMARY</b>		
The number of existing institutions		= 13425
Number of institutions covered during 01.04.17 to 31.03.18		= 13425 (100%)
<b>ii) UPPER PRIMARY WITH PRIMARY CLASSES</b>		
The number of existing institutions		= 0
Number of institutions covered during 01.04.17 to 31.03.18		= 0
<b>ii) UPPER PRIMARY</b>		
The number of existing institutions		= 6732
Number of institutions covered during 01.04.17 to 31.03.18		= 6732 (100%)

The information reveals that all the eligible institutions in the State have been covered under MDMS.

### **2.1 Coverage of Children**

#### **2.1.1 Coverage against Enrolment :**

**a) Primary - Coverage in terms of No. of children. Difference between Enrolment vs Average No. of Children Availed MDM (Achievement) (Refer Table 2.3 of the Analysis Sheet).**

Total Enrolment as on 30.09.2017	= 995960
Average number of children availed MDM during 01.04.17 to 31.03.18	= 856476 (86%)

**b) Upper Primary : Coverage in terms of No. of children. Difference between Enrolment vs Average No. of Children Availed MDM (Achievement) – UPPER PRIMARY (Refer Table 2.4 of the Analysis Sheet).**

Total Enrolment as on 30.09.2017	= 711921
Average number of children availed MDM during 01.04.17 to 31.03.18	= 596234(84%)

#### **2.1.2 Coverage against PAB-MDM approval :**

**a) Primary : Coverage in terms of No. of children. Difference between PAB Approval (Target) vs Average No. of Children Availing MDM (Achievement) (Refer Table 2.5 of the Analysis Sheet).**

The number of children approved by MDM PAB for 2017-18	= 905000
--	----------

Average number of children availed MDM during 01.04.17 to 31.03.18 = 856476 (94%)

**b) Upper Primary: Coverage in terms of No. of children. Difference between PAB Approval (Target) Vs Average No. of Children Availing MDM (Achievement) (Refer Table 2.6 of the Analysis Sheet).**

The number of children approved by MDM PAB for 2017-18 = 640000

Average number of children availed MDM during 01.04.17 to 31.03.18 = 596234(93%)

**2.1.3 No. of Meals: Difference between No. of meal to be served (Target) Vs. No. of meals served (Achievement)- PY+U PY (Refer Table 2.7 of the Analysis Sheet).**

The number of meals to be served during 01.04.17 to 31.03.18 = 3769.53 Lakh

The number of meals served during 01.04.17 to 31.03.18 = 3358.81 Lakh(89%)

**2.2 FOODGRAINS (PRIMARY + UPPER PRIMARY)**

**2.2.1 Level of Opening balance as on 01.04.17: (Refer Table 3.2 of the Analysis Sheet).**

The opening balance of food grain with the State as on 01.04.2017 was 4482.09 MTs. The total allocation of food grains during 2017-18 is 45547.21 MTs. More than 10% opening balance as on 01.04.2017 was available at Pathankot (22%), Sangrur (17%), Roopnagar (16%), Mansa, Gurdaspur, Faridkot (14% each), Jalandhar (13%).

**2.2.2 Level of unspent balance as on 31.03.18: (Refer Table 3.3 of the Analysis Sheet).**

The unutilized food grain with the State as on 31.03.2018 was 5005.54 MT (11%). However some districts had more than 10% of unutilized food grains with them. They are Sangrur (19%), Roopnagar, Ludhiana and Faridkot (17% each), Hoshiarpur (15%) and Amritsar (14%).

**2.2.3 Availability of Food grains: (01.04.17 to 31.03.18) (Refer Table 3.5 of the Analysis sheet).**

The State Government Lifted 41064.23 MTs of food grain from Food Corporation of India. The State had unutilized food grain of 4482.09 MTs with it at the beginning of the year. Thus the total availability of food grain with the State was 45546.32 MTs which is almost equal to the annual allocation of 45547.21 MTs of food grains to the State during 2017-18.

**2.2.4 Utilization of food grains: (Refer Table 3.7 of the Analysis sheet)**

The State utilized 40540.78 MTs (89%) of food grains against the allocation of 45547.21 MTs. Some districts had utilized less %age of food grains. The intra-district utilization ranged between 86% to 91%.

**2.2.5 Payment of cost of foodgrains to FCI: (Refer Table 3.9 of the Analysis sheet)**

The FCI has submitted bills for Rs. 1042.65 lakh during 2017-18 towards cost of food grains. The State has made payment of Rs.1042. lakh (100%) to FCI.

**2.3 COOKING COST (PRIMARY + UPPER PRIMARY)**

**2.3.1 Level of Opening balance as on 01.04.17: (Refer Table 4.1.1 of the Analysis Sheet)**

The State had negative opening balance of Rs. 1840.48 lakh (10%) as on 01.04.2017.

### **2.3.2 Level of closing balance as on 31.03.2018 : (Refer Table 4.1.2 of the Analysis Sheet)**

The closing balance of cooking cost was Rs. 2439.85 lakh (13 %) of the annual allocation of Rs. 18787.50 lakh. However, some districts had relatively higher closing balance of cooking cost. They are Mansa (19%), Sangrur, Pathankot and Barnala (18% each).

### **2.3.3 Utilization of Cooking cost : (Refer Table 4.5 of the Analysis Sheet).**

The State has utilized Rs. 16719.84 lakh (89%) against the allocation of 18787.50 lakh during 2017-18.

## **2.4 Reconciliation of utilization and performance during 2017-18 (01.04.17 to 31.03.2018)**

### **2.4.1 Mismatch in utilization of Food grains vis-à-vis cooking cost: (Refer Table – 5.1 of Analysis Sheet)**

Ideally the percentage utilization of cooking costs and food grains should tally with each other. The utilization of cooking cost (89%) and food grains (89%) matches with each other. Thus, there is no mismatch in the utilization of cooking cost and food grains.

### **2.5 Cook-Cum-Helper (PRIMARY + UPPER PRIMARY): (Refer Table – 6.2 of Analysis Sheet).**

The State has engaged 42545 cook-cum-helpers (CCH) against PAB approval of 49449. Thus, 6904 CCH have not been engaged by the State. These CCH are to be paid honorarium @ Rs.1000.00 per month per cook-cum-helper for ten months in a year. This honorarium is shared between the Centre and the State in 60:40 ratio. However, States can contribute more from their own resources. The State is making additional contribution of Rs.700 per CCH per month over and above its minimum mandatory contribution of Rs.400 per CCH per month. Thus the State is contributing Rs.1100 per month per CCH.

The State had opening balance of Rs. 903.00 lakh on 01.04.2017. An amount of Rs. 8002.28 lakh was released for payment of honorarium to CCH. Thus Rs. 8905.28 lakh were made available to the State during 2017-18. The expenditure is Rs. 7749.02 lakh (92%) on an average.

The enrolment of the students during 2018-19 has improved. Therefore, the State proposes to engage the remaining 6904 CCH against the already approved 49449 CCH.

### **2.6 Utilization of MME (Refer Table – 7.2 of Analysis Sheet)**

The State had negative opening balance of Rs.118-65 lakh as on 01.04.2017. The annual allocation was Rs.284.00 lakh against which 281.37 lakh were released during 2017-18. Thus the State had total availability of Rs.162.72lakh during 2017-18. The State has utilized Rs.375.28 lakh (132%) of the annual allocation by incurring additional expenditure from its resources.

### **2.7 Utilization of Transportation Assistance (Refer Table – 8.2 of Analysis Sheet)**

The State had negative opening balance of Rs.1.80 lakh as on 01.04.2017. The annual allocation for Transport Assistance during 2017-18 is Rs. 341.61 lakh. The State had lifted 41064.23 MTs of food grain from FCI during 2017-18. Thus, transportation assistance @ 75 per quintal for carrying the food grains to schools is Rs. 307.98 lakh. The State has incurred the expenditure of Rs. 307.99 lakh (90% of annual allocation) on transportation of food grains from FCI godowns to schools.

## 2.8 Construction of Kitchen-cum-stores (Reference Table -9.1.3 of Analysis Sheet)

The non-recurring central assistance of Rs. 11659.00 lakh was released during 2006-07 to 2009-10 for the construction of 18969 kitchen-cum-stores. The State has utilized the entire non-recurring central assistance for the construction of 18969 kitchen-cum-stores.

## 2.9 Procurement of Kitchen devices (Reference Table -9.2.3 of Analysis sheet)

The non-recurring central assistance of Rs. 948.25 lakh was released during 2006-07 to 2009-10 for the procurement of kitchen devices for 18969 schools @ Rs. 5000/- each school. Non recurring central assistance of Rs.515.85 lakh was released during 2013-14 for the replacement of kitchen devices in 10317 schools. The State has utilized the entire non-recurring central assistance for the procurement and replacement of sanctioned kitchen devices.

## 3. Data Entry Status on the MIS Web Portal

### 3.1 Annual & Monthly Data Entry Status

<b>FY-2017-18</b>					
<b>Annual Data Entry Status_PUNJAB</b>					
S. No.	District	Total Schools	Completed(Saved)	Pending	% Completed
1	AMRITSAR	1307	1307	0	100%
2	BARNALA	307	307	0	100%
3	BATHINDA	702	702	0	100%
4	FARIDKOT	425	425	0	100%
5	FATEHGARH SAHIB	673	673	0	100%
6	FAZILKA	712	712	0	100%
7	FIROZPUR	855	855	0	100%
8	GURDASPUR	1593	1593	0	100%
9	HOSHIARPUR	1798	1798	0	100%
10	JALANDHAR	1497	1497	0	100%
11	KAPURTHALA	809	809	0	100%
12	LUDHIANA	1545	1545	0	100%
13	MANSA	499	499	0	100%
14	MOGA	619	619	0	100%
15	MOHALI	670	670	0	100%
16	MUKTSAR	559	559	0	100%
17	NAWANSHAHR	660	660	0	100%
18	PATHANKOT	554	554	0	100%
19	PATIALA	1326	1326	0	100%
20	RUPNAGAR	840	840	0	100%
21	SANGRUR	1051	1051	0	100%
22	TARAN TARAN	789	789	0	100%
	<b>Total</b>	<b>19790</b>	<b>19790</b>	<b>0</b>	<b>100%</b>

Source: [www.trgmdm.nic.in](http://www.trgmdm.nic.in) as on 31 May'18 till 17:51 hrs



### 3.2. Monthly data Entries during 2017-18

<b>FY 2017-18</b>															
<b>Monthly Data Entry Status_PUNJAB</b>															
S. No.	District	Total Schools	% April	% May	% June	% July	% Aug	% Sept	% Oct	% Nov	%Dec	Jan%	Feb %	Mar %	Average %
1	AMRITSAR	1307	100%	100%	100%	100%	100%	100%	100%	100%	100%	100%	100%	99%	100%
2	BARNALA	307	100%	100%	100%	100%	100%	100%	100%	100%	100%	100%	100%	100%	100%
3	BATHINDA	702	100%	100%	100%	100%	100%	100%	100%	100%	100%	100%	100%	100%	100%
4	FARIDKOT	425	100%	100%	100%	100%	100%	100%	100%	100%	100%	100%	100%	100%	100%
5	SAHIB	673	100%	100%	100%	100%	100%	100%	100%	100%	100%	100%	100%	100%	100%
6	FAZILKA	712	100%	100%	100%	100%	100%	100%	100%	100%	100%	100%	100%	100%	100%
7	FIROZPUR	855	100%	100%	100%	100%	100%	100%	100%	100%	100%	100%	100%	100%	100%
8	GURDASPUR	1593	100%	100%	100%	100%	100%	100%	100%	100%	100%	100%	100%	100%	100%
9	HOSHIARPUR	1798	100%	100%	100%	100%	100%	100%	100%	100%	100%	100%	100%	100%	100%
10	JALANDHAR	1497	100%	100%	100%	100%	100%	100%	100%	100%	100%	100%	100%	100%	100%
11	KAPURTHALA	809	100%	100%	100%	100%	100%	100%	100%	100%	100%	100%	100%	100%	100%
12	LUDHIANA	1545	100%	100%	100%	100%	100%	100%	100%	100%	100%	100%	100%	100%	100%
13	MANSA	499	100%	100%	100%	100%	100%	100%	100%	100%	100%	100%	100%	100%	100%
14	MOGA	619	100%	100%	100%	100%	100%	100%	100%	100%	100%	100%	100%	100%	100%
15	MOHALI	670	100%	100%	100%	100%	100%	100%	100%	100%	100%	100%	100%	100%	100%
16	MUKTSAR	559	100%	100%	100%	100%	100%	100%	100%	100%	100%	100%	100%	100%	100%
17	NAWANSHAHR	660	100%	100%	100%	100%	100%	100%	100%	100%	100%	100%	100%	100%	100%
18	PATHANKOT	554	100%	100%	100%	100%	100%	100%	100%	100%	100%	100%	100%	100%	100%
19	PATIALA	1326	100%	100%	100%	100%	100%	100%	100%	100%	100%	100%	100%	100%	100%
20	RUPNAGAR	840	100%	100%	100%	100%	100%	100%	100%	100%	100%	100%	100%	100%	100%
21	SANGRUR	1051	100%	100%	100%	100%	100%	100%	100%	100%	100%	100%	100%	100%	100%
22	TARAN TARAN	789	100%	100%	100%	100%	100%	100%	100%	100%	100%	100%	100%	100%	100%
	<b>Total</b>	<b>19790</b>	<b>100%</b>	<b>100%</b>	<b>100%</b>	<b>100%</b>	<b>100%</b>	<b>100%</b>	<b>100%</b>	<b>100%</b>	<b>100%</b>	<b>100%</b>	<b>100%</b>	<b>100%</b>	<b>100%</b>

Source: [www.trgmdm.nic.in](http://www.trgmdm.nic.in) as on 31 May'18 till 17:53 hrs

### 3.3. AUTOMATED MONITORING SYSTEM

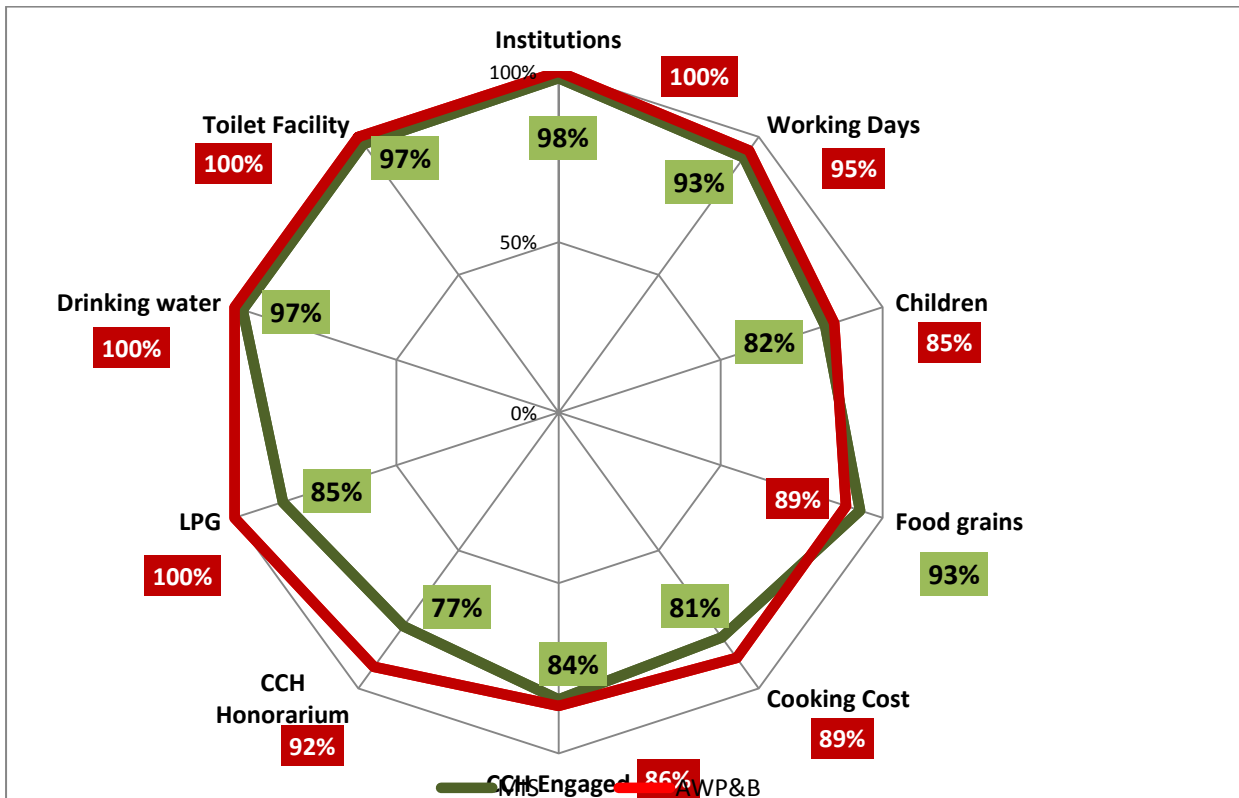
SMS based Automated Monitoring System (AMS) is in operation in the State. SMS is sent by the schools mid-day-meal incharge on registered numbe Information collected under AMS is validated.

Dictrict wise Meals Served on : 30 May'2018 Punjab								
S.No.	District	Total Schools	Reported Schools	% Reported Schools	Total Enrolment	Reported Schools Enrolment	Meals Served	Meals Served Percentage
1	AMRITSAR	1365	245	18%	156438	35334	25900	73.30%
2	BARNALA	305	161	53%	42270	21989	14722	66.95%
3	BATHINDA	688	263	38%	101966	43904	28346	64.56%
4	FARIDKOT	414	138	33%	52178	18210	12593	69.15%
5	FATEHGARH SAHIB	674	218	32%	40358	14061	9858	70.11%
6	FAZILKA	712	352	49%	90950	48373	39150	80.93%
7	FIROZPUR	859	195	23%	79147	24179	18021	74.53%
8	GURDASPUR	1585	496	31%	103860	37609	27167	72.24%
9	HOSHIARPUR	1789	817	46%	111592	56007	38063	67.96%
10	JALANDHAR	1483	720	49%	132122	73644	51446	69.86%
11	KAPURTHALA	812	260	32%	57455	20889	14442	69.14%
12	LUDHIANA	1627	498	31%	187857	77273	56343	72.91%
13	MANSA	499	251	50%	67626	32961	23933	72.61%
14	MOGA	619	182	29%	82367	27229	17132	62.92%
15	MOHALI	667	231	35%	58608	22949	17349	75.60%
16	MUKTSAR	563	321	57%	73436	45531	33479	73.53%
17	NAWANSHAHR	654	398	61%	43532	26574	20433	76.89%
18	PATHANKOT	548	296	54%	35277	21561	14693	68.15%
19	PATIALA	1362	390	29%	128161	49132	33948	69.10%
20	RUPNAGAR	856	327	38%	49166	22971	17363	75.59%
21	SANGRUR	1054	439	42%	114757	50997	36768	72.10%
22	TARAN TARAN	797	86	11%	89995	10126	7818	77.21%
	<b>Total</b>	<b>19932</b>	<b>7284</b>	<b>37%</b>	<b>1899118</b>	<b>781503</b>	<b>558967</b>	<b>71.52%</b>

#### 3.4. Mismatch in Data under MIS and AWP&B

COMPONENT	MIS	AWP&B
Institutions	19790	20157
Working Days	225	231
Children	1405144	1452710
Food grains (In MT)	42548.11	40540.78
Cooking Cost (Rs. in Lacs)	15308.82	16719.84
CCH Engaged	41603	42545
CCH Honorarium (Rs. in Lacs)	6514.83	7749.02
LPG	17151	20157
Drinking water	19653	20157
Toilet Facility	19644	20157

The graphical representation of the differences in data from MDM-MIS and as submitted by the State through Annual Work Plan & Budget is given below:



Major mismatch has been observed in respect of payment of honorarium to CCH and LPG. The State may reconcile this mismatch.

#### 4. Fund Flow

Funds relating to mid-day-meal are being transferred from head office to respective District Education Officer's bank accounts through RTGS and further the funds are transferred to school level through District Authorities.

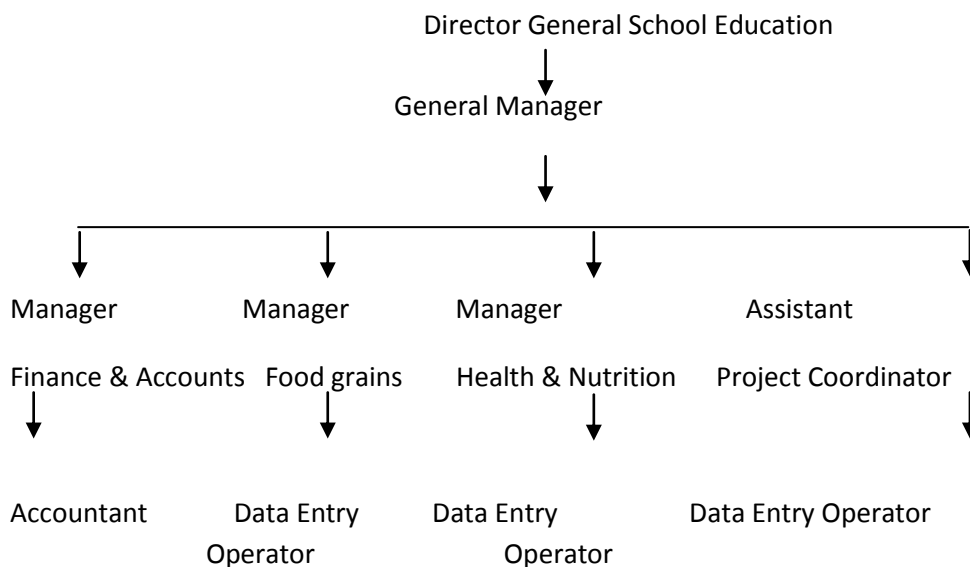
Type of Instalment	Date of receipt by				
	State	Directorate	District	Block	School
Ad-hoc	01.05.17	18.07.17	19.07.17	20.07.17	21.07.17
Balance of 1 <sup>st</sup> instalment	28.12.17	08.01.18	09.01.18	10.01.18	12.01.18
2 <sup>nd</sup> Instalment	22.02.18	22.03.18	23.03.18	27.03.18	30.03.18

The State released ad-hoc grant of central assistance to the schools after 83 days. However, the balance of first installment was released within a fortnight and 2<sup>nd</sup> installment after 38 days. Thus there is a delay in the release of funds to the implementing agencies.

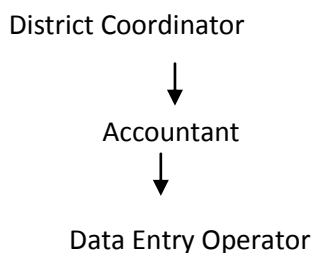
#### 5. Management Structure

Mid Day Meal Scheme in the State is implemented under the overall supervision of The Chief Secretary Punjab. School Education Department has been declared Nodal Agency for the implementation of the scheme in the schools, which is headed by the Secretary School Education and is looked after by the Director General School Education at the State level. Under his control a separate Mid Day Meal Society has been constituted at the State Level.

## State Level



## District Level



## Block Level

One Assistant Block Manager has been posted in each Block.

For preparing Annual Plan for the year 2018-19, bottom up approach has been adopted i.e. from school to Block and District to state level, so that the information is gathered from grass root level.

## **6. Capacity Building**

39318 Cook-cum-helpers have been got trained till March 2018 through Hotel Management Institutes and Food Craft Institutes at District Level and further through these master trainers, training to Cook-cum-helpers have been imparted at Block Level. Workshop on food Safety, Quality and personal hygiene for Cook-cum-helpers working under Mid Day Meal Scheme was held in District Mansa, Faridkot and Muktsar by NGO Akshaya Patra, New Delhi.

## **7. Grievance Redressal Mechanism**

A 24 hour toll free no. at telephone no.1800-137-2215 has been installed at the State level. Complaints received are recorded in the registers and action is taken within three days to dispose it off. The State had received 75 complaints during the year and all of them have been disposed off. No complaint is pending in the State.

## **8. Testing of Meal by accredited labs**

47 meal samples have been tested by accredited laboratories. All of them were found to be as per norms. The samples have been collected from only six districts viz. Amrilsar (2), Fatehgarh Sahib (23), Mansa(1), Moga (11), Roop Nagar (7) and SAS Nagar (3).

## **9. Community participation:**

i) **Tasting of meal:** Mid Day Meal prepared in schools is regularly checked and tasted by mothers self help groups, further one of the members of School Management Committee regularly visits the school in noon time and tastes the Mid Day Meal It is mandatory for each school to maintain a taste register in which feedback/remarks are recorded after tasting of meals by 2 Adults (one of them is a school teacher and another any community member).

## **ii) Contributions in Kind**

Community is contributing towards Mid Day Meal Scheme by providing fruits or packed biscuits on the occasion of birth or marriage anniversaries. School infrastructure such as school benches, water coolers, R.O. systems, fans etc. have been donated by village Panchayats etc. In-kind donations of Rs 70.74 lakh has been made during 2017-18 by various clubs, trusts and village panchayats. 75 hand washing units have been constructed the schools of Moga district by 'Nestle' company.

## **10. Social Audit**

Social Audit has been conducted in the Punjab State in 2 Districts namely Sangrur and Roopnagar for which Punjab University, Chandigarh has been engaged. The Social Audit report has been submitted to the MHRD, New Delhi. Thereafter, social audit has not been started in other districts of the State.

## **11. Monitoring & Supervision**

Mid Day Meal Scheme is being monitored regularly at Block, District and State level. Information regarding distribution of food grains, Cooking Cost and honorarium to Cook-cum-helpers is also being uploaded regularly in the Web-portal. Deputy Commissioner of each district as well as other district officers has been instructed to visit schools regarding implementation of mid-day-meals. District Education Officers have been directed the Block Education Officers to visit atleast 20 schools in a month and report is submitted at district level. District Coordinators, Mid-Day-Meal posted at district level visit at least two schools on daily basis. Similarly Assistant Block Managers posted at each block visit 20 schools in a month.

## **12. Rashtriya Bal Swasthya Karyakaram:**

Under RBSK programme, State Nodal officers, District Nodal officers and School Nodal officers have been appointed. Advance Tour programmes of health department have been uploaded on the [www.ssapunjab.org](http://www.ssapunjab.org) website. SMS to the students, parents are being sent in advance so that the students can avail the medical facility provided by the teams of health department. Free spectacles to 34233 students have been provided .

13. **Kitchen Gardens:** Kitchen gardens are available in 277 schools. The setting up of kitchen gardens is in progress in 119 schools. The State proposes to set up kitchen gardens in 2110 schools during 2018-19.

14. **Aadhar enrolment:** 1668059 (98% approx) students have been enrolled under Aadhar. Only 39822 students are yet to be enrolled under Aadhar. They would be enrolled during 2018-19.

15. **NGOs:** The meal is provided to 91943 students in 511 schools in six districts viz. Amritsar, Bhatinda, Moga, Nawansahar, Patiala and SAS Nagar through 2 Centralized Kitchens managed by Bagdanga Pachim Gheri Bishlakshmi Club and Stri Shakti. The Centralized Kitchen in Amritsar is providing meals to 38786 students in 192 schools. The maximum distance covered by this Centralized Kitchen is 70 Kms.

\*\*\*\*\*

**Part C : Recommendations of the Appraisal Team**

S. No.	Component	PAB Approval 2017-18	Proposal for 2018-19	Recommendations of Appraisal Team
<b>1</b>	<b>Institutions</b>			
1.1	Primary	13425	13390	13390
1.2	Upper Primary	6753	6759	6759
1.3	NCLP	98	97	97
<b>2</b>	<b>Children</b>			
2.1	Primary	940200	860582	856056
2.2	Upper Primary	659000	626047	620840
2.3	NCLP	4900	4800	4800
Total		1604100	1491429	1481696
<b>3</b>	<b>Working Days</b>			
3.1	Primary	247	255	255
3.2	Upper Primary	247	255	255
3.3	NCLP	300	300	300
<b>4</b>	<b>Cook cum Helper*</b>			

4.1	Primary	32247	32247	32247
4.2	Upper Primary	17202	17202	17202
<b>5</b>	<b>Drought</b>			
5.1	Children (Pry)	0	0	0
5.2	Children (U Pry)	0	0	0
5.3	Working days	0	0	0
5.4	Cook-cum-helpers	0	0	0
<b>6</b>	<b>Non Recurring</b>			
6.1	Kitchen cum Store	0	0	0
6.2	Kitchen Devices(New)	0	0	0
6.3	Kitchen Devices (Replacement)	8652*	8652	8652
<b>7</b>	<b>Central Assistance</b>			
7.1	Regular	<b>164.87 Cr</b>	<b>161.10 Cr</b>	<b>160.80 Cr</b>
7.2	Drought	0	0	0
7.3	<b>Non-recurring</b>			
i	Kitchen –cum-stores	0	0	0
ii	Kitchen devices(Rep)	0	<b>4.33 Cr</b>	<b>4.33 Cr</b>
<b>7.3</b>	<b>Total</b>	<b>164.87 Cr</b>	<b>165.43 Cr.</b>	<b>165.13 Cr.</b>

\*Approved by PAB-MDM during 2017-18. However, funds could not be released during 2017-18.They will be released during 2018-19.

#### Appendix-I

### PUNJAB

#### QUANTIFICATION OF CENTRAL ASSISTANCE

##### **A. Food grains**

Sl. No.	Stage	No. of Children	Working days	Quantity in MTs.		
				Rice	Wheat	Total
<b>Regular</b>						
<b>1</b>	Primary (@ 100 gms per child per school day)	856056	255	10914.715	10914.715	21829.43
<b>2</b>	U. Primary (@150 gms per child per school day)	620840	255	11873.565	11873.565	23747.13
<b>3</b>	NCLP ( @150 gms per child per school day)	4800	300	108.00	108.00	216.00

	<b>Total</b>	1481696		22896.28	22896.28	45792.56
<b>Drought</b>						
<b>4</b>	Primary (@ 100 gms per child per school day)	0	0	0	0	0
<b>5</b>	U. Primary (@150 gms per child per school day)	0	0	0	0	0
<b>TOTAL</b>		<b>0</b>	<b>0</b>	<b>0</b>	<b>0</b>	<b>0</b>

**B. Cost of Foodgrains, Cooking cost, Transport Assistance, Hon. to cook-cum-helpers and Management Monitoring and Evaluation (MME)**

Sl. No.	Component	Amount admissible
		(Rs. in lakh)
1	2	3
<b>Primary</b>		
1	Cost of Food grains for 10914.715 MTs of rice @ Rs.3000 per MT and 10914.715 MTs of Wheat @ Rs. 2000/	545.74
2	<b>Unit Cooking Cost- Rs. 4.13 per child per day for 856056 children for 255 days</b>	
2.1	<b>Central Share @ Rs. 2.48 per child per day</b>	5413.70
2.2	<b>Minimum Mandatory State Share @ 1.65 per child per day</b>	3601.86
3	<b>Transportation Cost @ Rs. 750.00 Per MT food grains</b> ( 856056 x 255 days x 0.0001 MT x Rs.750.00)	163.72
4	<b>Honorarium for cook cum Helper</b>	
4.1	<b>Central Share - (32247x Rs 600 x 10 months)</b>	1934.82
4.2	<b>State Share - (32247x Rs. 400 x 10 months)</b>	1289.88
5	<b>Management Monitoring and Evaluation (MME) @ 1.8% of</b> i) Cost of food grains ii) Cooking cost iii) Cost of transportation and iv) Honorarium to cook – cum-helpers	145.04
<b>Total Central Share</b>		<b>8203.02</b>
<b>Upper Primary</b>		
6	Cost of Food grains for 11873.565 of Rice @ Rs. 3000/- per MT and 11873.565 MTs of Wheat @ Rs.2000/- per MT	593.68
7	<b>Unit Cooking Cost- Rs. 6.18 per child per day for 620840 children for 255days</b>	
7.1	<b>Central share @ Rs.3.71 per child per day</b>	5873.46
7.2	<b>Minimum Mandatory State Share @ Rs.2. 47 per child per day</b>	3910.36
8	<b>Transportation cost @ Rs. 750.00 Per MT food grains</b> (620840 x 255 days x 0.00015 x 750)	178.10
9	<b>Honorarium for cook cum Helper</b>	



9.1	<b>Central Share - (17202 x Rs 600 x 10 months)</b>	1032.12
9.2	<b>Minimum Mandatory State Share- ( 17202 x Rs. 400 x 10 months)</b>	688.08
10	<b>Management Monitoring and Evaluation (MME) @ 1.8% of</b> 1) Cost of food grains 2) Cooking cost 3) Cost of transportation and 4) Honorarium to cook – cum-helpers	138.19
<b>TOTAL Central Share</b>		<b>7815.55</b>

**C. Cost of Foodgrains, Cooking cost, Transport Assistance, Hon. to cook-cum-helpers and Management Monitoring and Evaluation (MME) for NCLP**

11.	Cost of Food grains for 108 MT of Rice @ Rs. 3000/- per MT and 108 MT of Wheat @ Rs.2000/- per MT	5.40
12.	<b>Unit Cooking Cost- Rs. 6.18 per child per day for 4800 children for 300 days</b>	
12.1	<b>Central share @ Rs.3.71 per child per day</b>	53.42
12.2	<b>Minimum Mandatory State Share @ Rs.2. 47 per child per day</b>	35.57
13.	<b>Transportation cost @ Rs. 750.00 Per MT food grains</b> ( 4800 x 300 days x 0.00015 x 750)	1.62
14	<b>Management Monitoring and Evaluation (MME) @ 1.8% of</b> 1) Cost of food grains 2) Cooking cost 3) Cost of transportation and 4) Honorarium to cook – cum-helpers	1.09
<b>Total Central Share</b>		<b>61.53</b>
<b>Grand Total (Primary + Upper Primary + NCLP)</b>		<b>16080.10</b>

**E. Non-recurring :**

Item		Central Share	State Share
Kitchen-cum-store		0	0
Kitchen Devices	New	0	0
	Replacement	432.80	0

\*PAB has approved the replacement of kitchen devices in 8652 schools during 2017-18. However, the central assistance could not be released during 2017-18. It will be released during 2018-19.

**F. Total Requirement of Funds for 2018-19**

(Rs. in lakh)

Component		As per revised funding pattern in the ratio of 60/40	
		Centre Share	Minimum Mandatory State share
Recurring	Normal	16080.10	9525.74
	Drought	0	0
Non- recurring		432.80	0

<b>Total</b>	<b>16512.9</b>	<b>9525.74</b>
--------------	----------------	----------------

--oOo--